



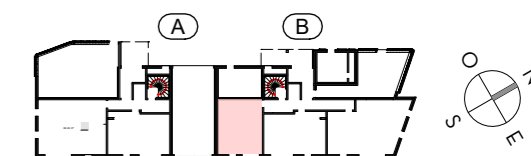
L'ÉVEIL

Vivre dans un parc, habiter la ville

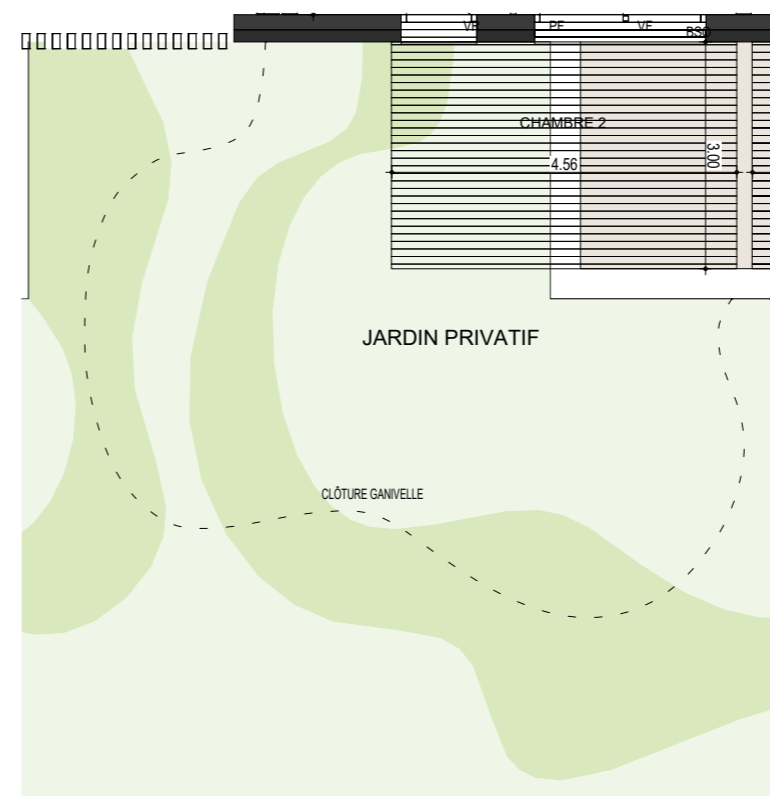
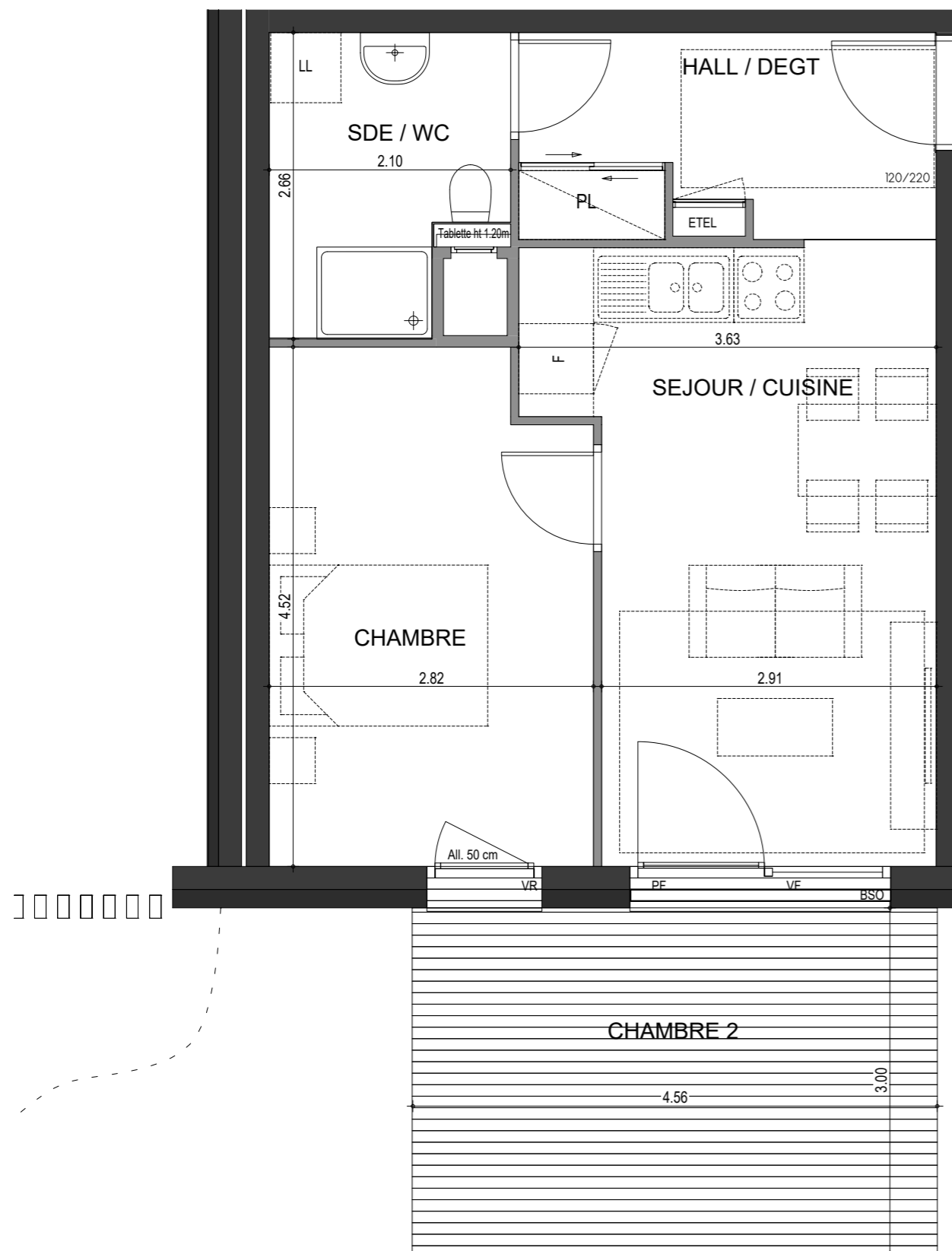
OSTARA

**PLAN DE
PRE-COMMERCIALISATION**

RUE DES CARILLONS
74940 ANNECY



B03



**2 PIECES
HALL B - B03 - RDC**

HALL / DEGT.	6.17 m ²
SEJOUR / CUISINE	16.79 m ²
CHAMBRE	12.25 m ²
SDE / WC	4.95 m ²

SURFACE TOTALE HABITABLE	40.14 m²
TERRASSE	13.65 m ²
JARDIN PRIVATIF	36.75 m ²
SURFACE TOTALE PRIVATIVE	90.54 m²