



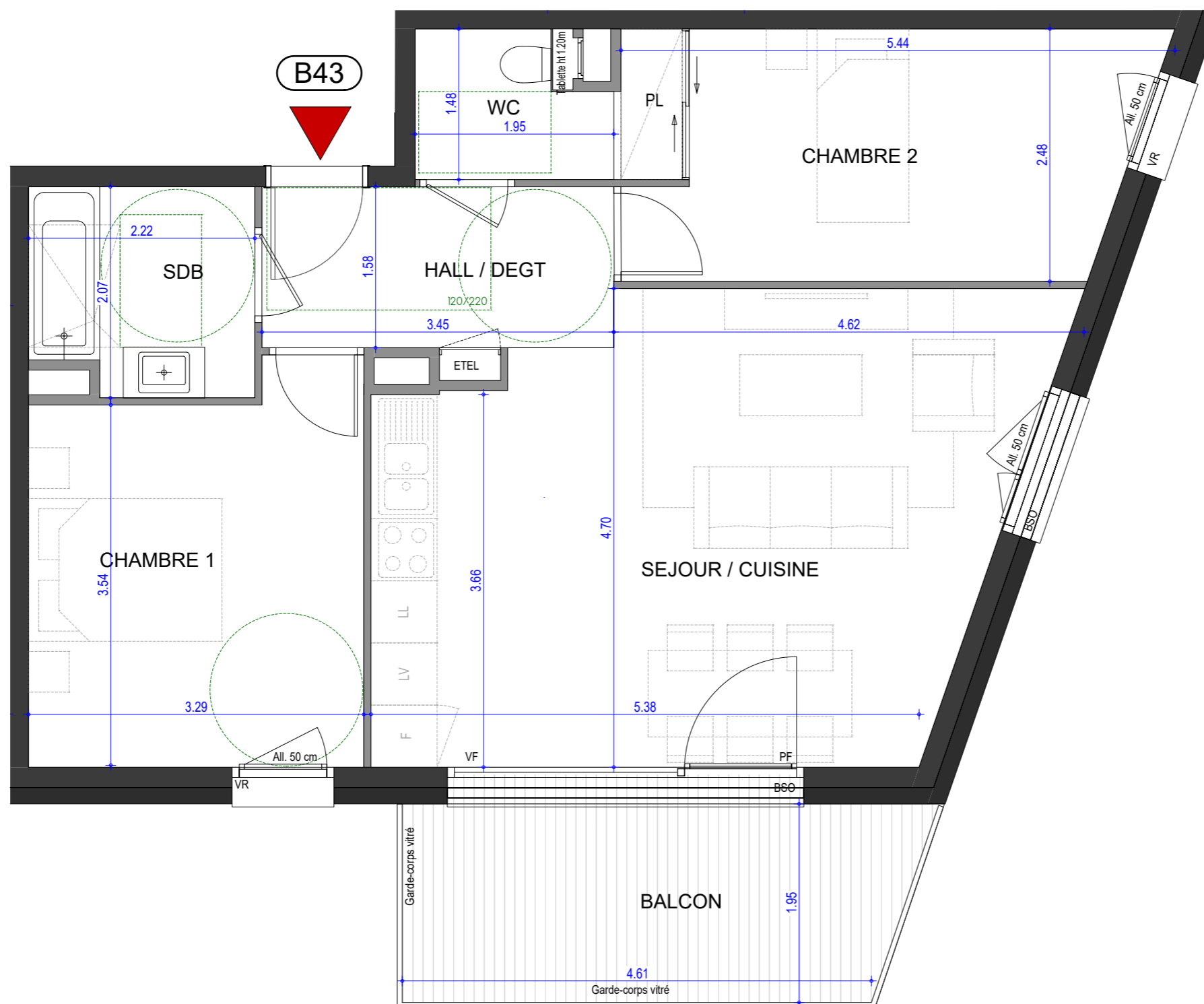
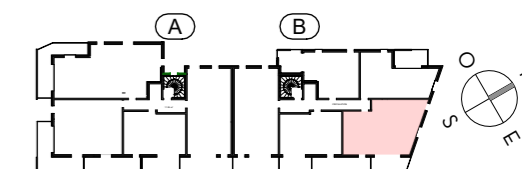
L'ÉVEIL

Vivre dans un parc, habiter la ville

OSTARA

PLAN DE PRE-COMMERCIALISATION

RUE DES CARILLONS
74940 ANNECY



3 PIECES HALL B - B43 - R+4

| | |
|---------------------------------|----------------------------|
| HALL / DEGT. | 5.46 m ² |
| SEJOUR / CUISINE | 27.15 m ² |
| CHAMBRE 1 | 12.21 m ² |
| CHAMBRE 2 | 12.27 m ² |
| SDB | 4.35 m ² |
| WC | 2.51 m ² |
| SURFACE TOTALE HABITABLE | 63.95 m² |
| BALCON | 9.63 m ² |
| SURFACE TOTALE PRIVATIVE | 73.58 m² |