



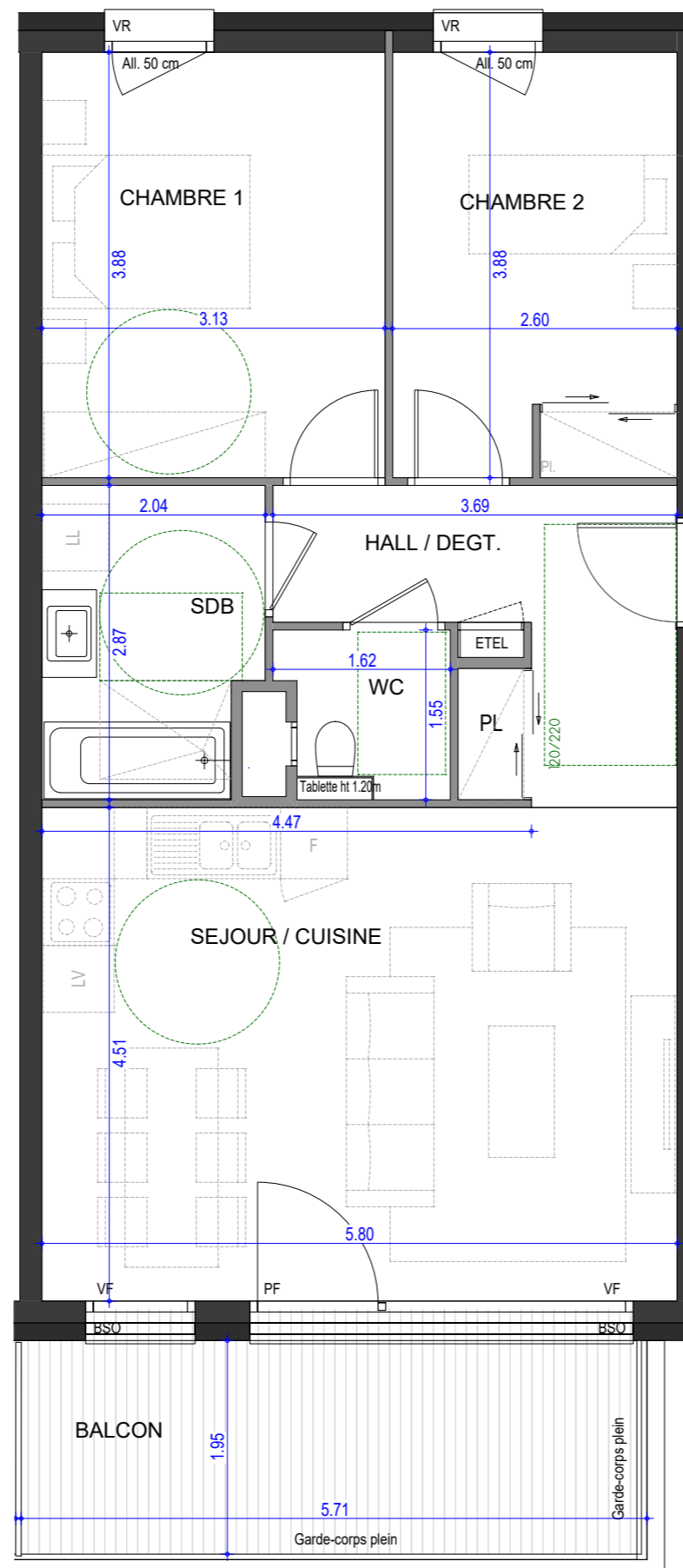
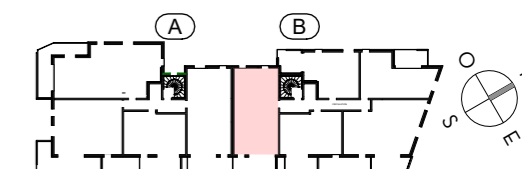
L'ÉVEIL

Vivre dans un parc, habiter la ville

OSTARA

**PLAN DE
PRE-COMMERCIALISATION**

RUE DES CARILLONS
74940 ANNECY



B25

**3 PIECES
HALL B - B25 - R+2**

HALL / DEGT.	7.66 m ²
SEJOUR / CUISINE	26.13 m ²
CHAMBRE 1	12.17 m ²
CHAMBRE 2	10.04 m ²
SDB	5.52 m ²
WC	2.12 m ²
SURFACE TOTALE HABITABLE	63.64 m²
BALCON	11.06 m ²
SURFACE TOTALE PRIVATIVE	75.70 m²