



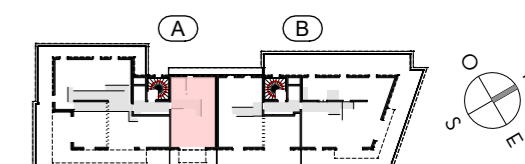
L'ÉVEIL

Vivre dans un parc, habiter la ville

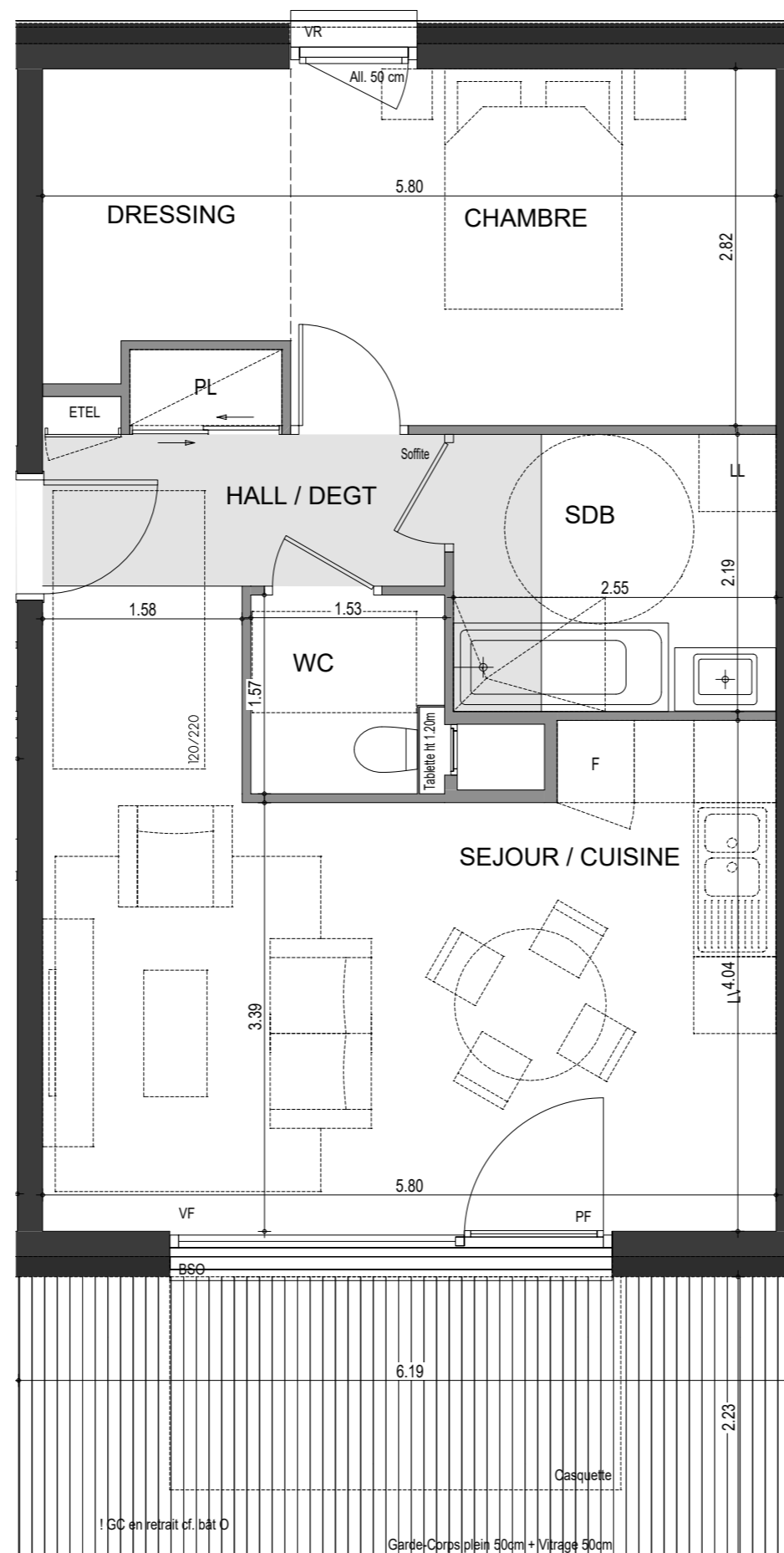
OSTARA

**PLAN DE
PRE-COMMERCIALISATION**

RUE DES CARILLONS
74940 ANNECY



A61



**2 PIECES
HALL A - A61 - R+6**

HALL / DEGT.	6.83 m ²
SEJOUR / CUISINE	21.19 m ²
CHAMBRE	15.26 m ²
SDB	5.58 m ²
WC	2.26 m ²

SURFACE TOTALE HABITABLE	51.12 m²
TERRASSE	13.50 m ²
SURFACE TOTALE PRIVATIVE	64.62 m²