

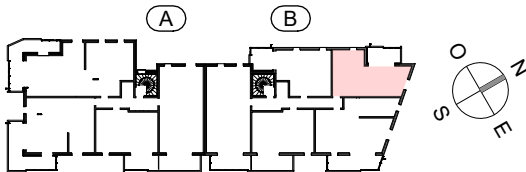
L'ÉVEIL

Vivre dans un parc, habiter la ville

OSTARA

PLAN DE
VENTE

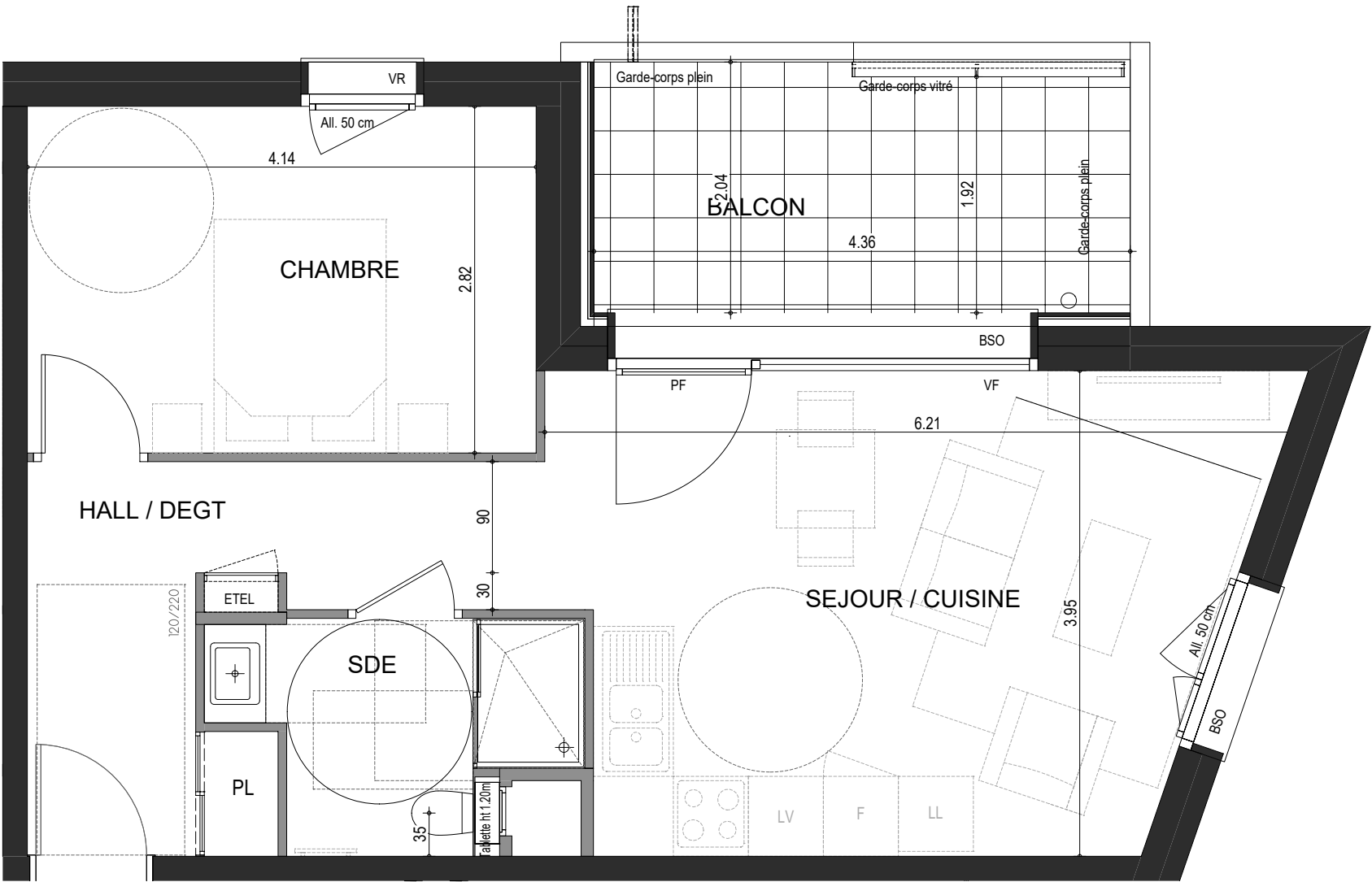
RUE DES CARILLONS
74940 ANNECY



2 PIECES
HALL B - B32 - R+3

HALL / DEGT.	8.20 m ²
SEJOUR / CUISINE	21.05 m ²
CHAMBRE	11.68 m ²
SDE / WC	4.58 m ²

SURFACE TOTALE HABITABLE	45.51 m ²
BALCON	9.88 m ²
SURFACE TOTALE PRIVATIVE	55.39 m ²



B32