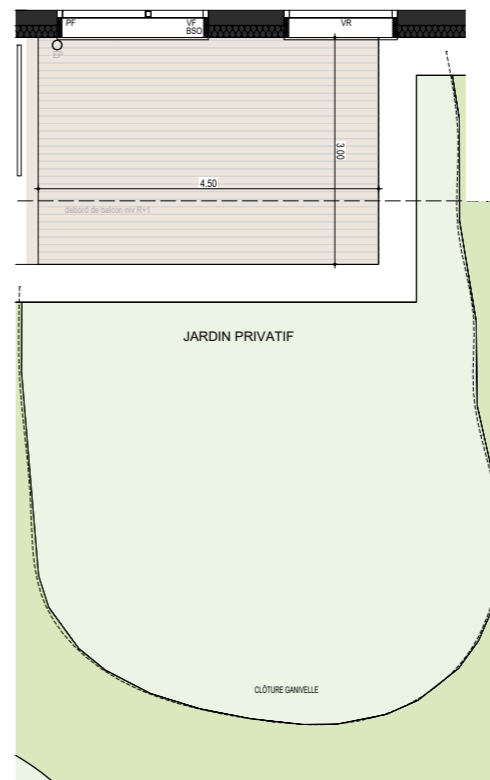
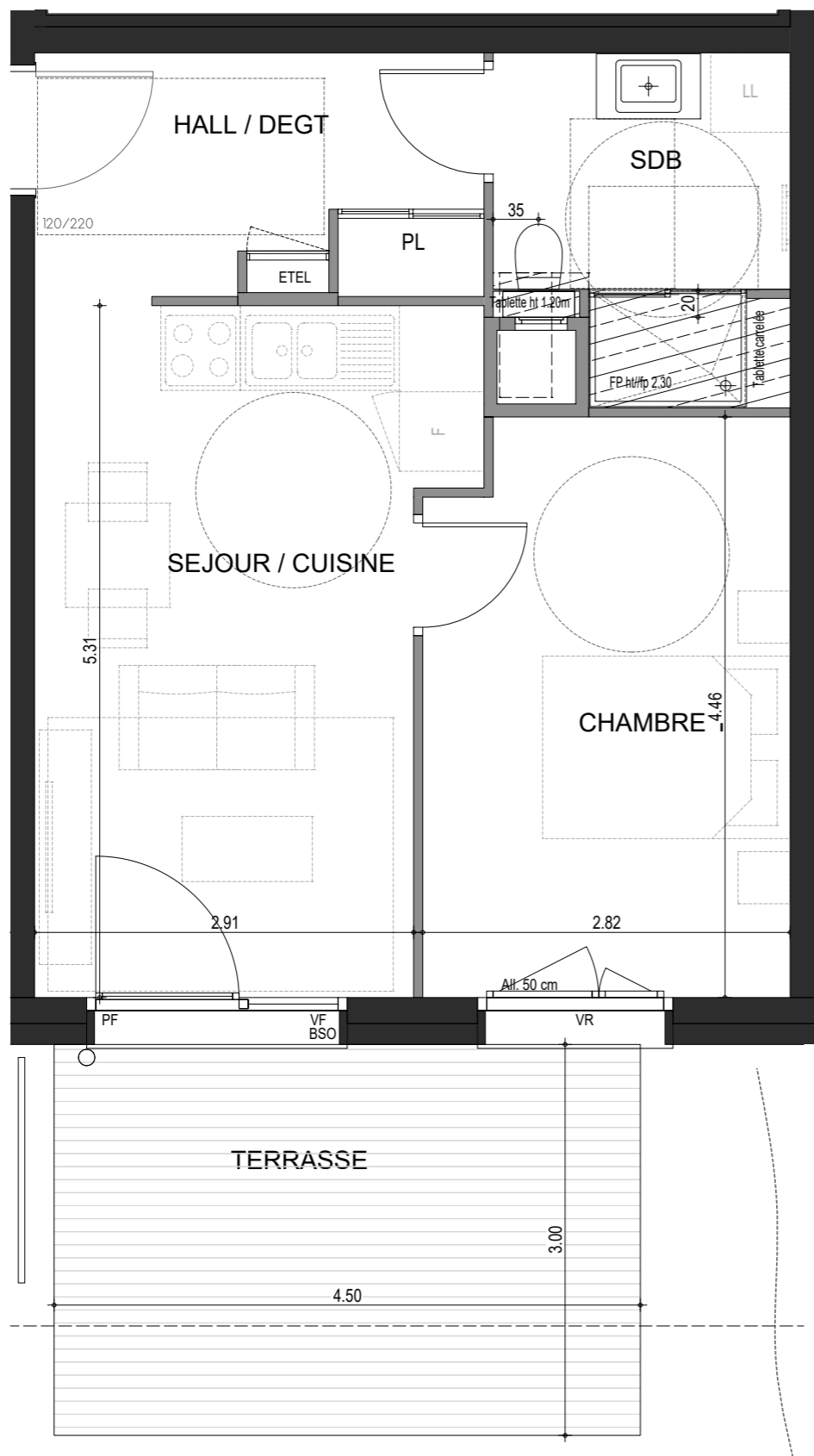


A03

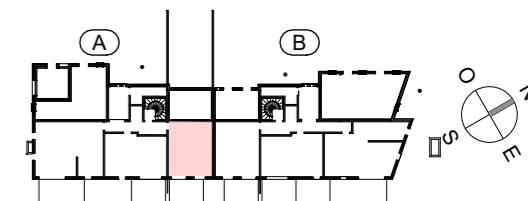


L'ÉVEIL  
Vivre dans un parc, habiter la ville

OSTARA

PLAN DE  
VENTE

RUE DES CARILLONS  
74940 ANNECY



2 PIECES  
HALL A - A03 - RDC

HALL / DEGT.	6.14 m <sup>2</sup>
SEJOUR / CUISINE	16.21 m <sup>2</sup>
CHAMBRE	12.23 m <sup>2</sup>
SDE / WC	5.52 m <sup>2</sup>

SURFACE TOTALE HABITABLE	40.10 m <sup>2</sup>
TERRASSE	13.50 m <sup>2</sup>
JARDIN PRIVATIF	36.75 m <sup>2</sup>
SURFACE TOTALE PRIVATIVE	90.35 m <sup>2</sup>